

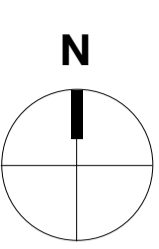
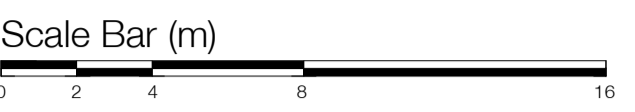
The use of this data by the recipient acts as an agreement of the following statements. Do not use this data if you do not agree with any of the following statements:

Ryder Architecture has co-ordinated relevant information received from third parties, but are not responsible for the content of the information received from others.

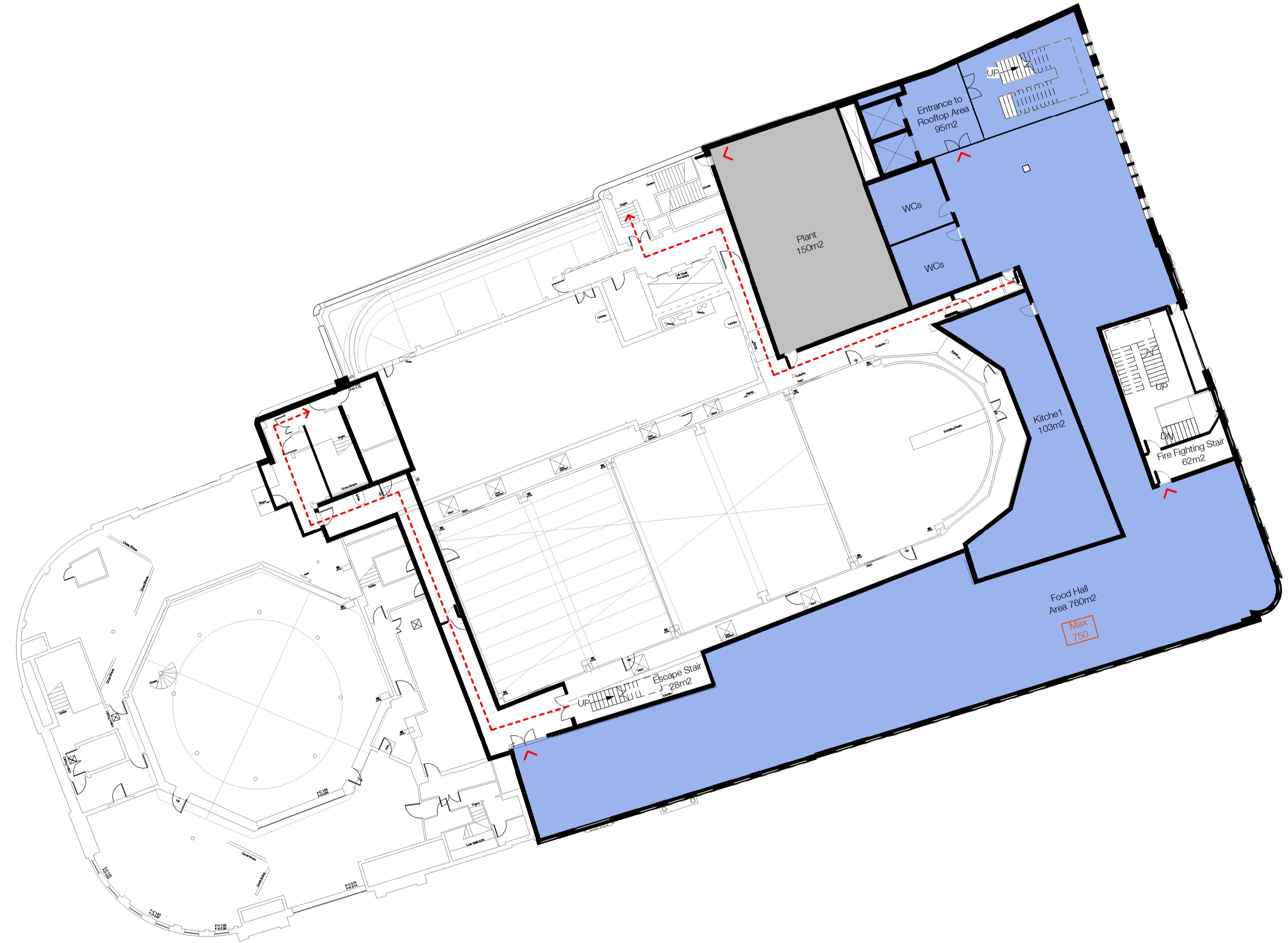
The controlled version of this drawing should be viewed in DWG or PDF format not DWG or other formats. All prints of this drawing must be made in full colour.

Where this drawing has been based upon Ordnance Survey data, it has been reproduced under the terms of Ryder Licence No. 100000144. Reproduction of this drawing in whole or in part is prohibited without the prior permission of Ordnance Survey.

Do not scale the drawing. Use figured dimensions in all cases. Check all dimensions on site. Report any discrepancies in writing to Ryder before proceeding.



- Key**
- Unit 1 - Leisure
 - Unit 2 - Retail
 - Unit 3 - Food Hall
 - Space for existing tenants
 - Bin Storage
 - Plant
 - Proposed Fire Exit
 - Proposed Fire Escape Route
 - Knock Out for Stair or Escalator if Required
 - Potential Occupancy to be confirmed by Structural and Fire Engineers.



1 Third Floor- Option 2

1 : 200

P2	Updated following workshop	LBO	HIA	06/12/22
P1	First Issue	LBO	HIA	29/11/22

Rev	Description	Drawn	Checked	Date
-----	-------------	-------	---------	------

Subability
Work in Progress

Project
Taras Properties Limited
Monument Mall
Newcastle

Drawing
Third Floor- Option 2

Drawing Number	Project ID	Originator	Zone	Level	Type	Role	Number
MMA	10613-00	RYD	00	G3	DR	A	3040

Project Number	Scale at A1	Status	Revision
10613-00	1 : 200	SO	P2