

COMING SOON

PRIME RETAIL OPPORTUNITY

Six new ground floor retail units

PILGRIM'S QUARTER

Newcastle upon Tyne



PILGRIM'S QUARTER

Newcastle upon Tyne



New Bridge Street West Elevation



The Location

Pilgrims Quarter is located in the heart of Newcastle City Centre on Pilgrim Street at its junction with Northumberland Street and Blakett Street.

The development will comprise of 600,000 sq ft of offices let to the Department of Work and Pensions.

Planned works of re-surfacing and street furniture will enhance the location and provide an attractive public realm on Completion in 2025.

**PILGRIM'S
QUARTER**
Newcastle upon Tyne



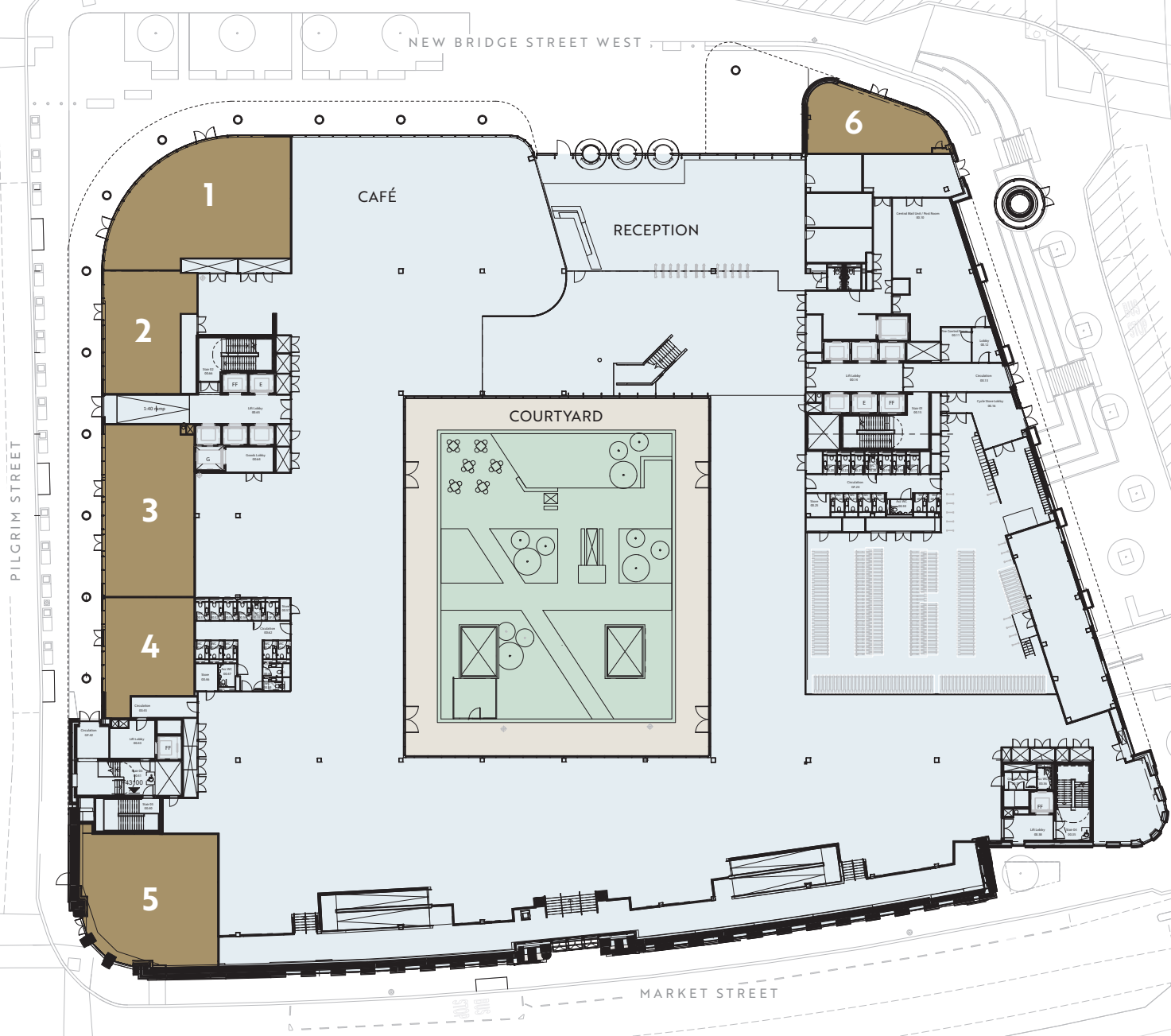
The Opportunity

The development will include six new retail units located at ground floor which will be of interest to Financial Services, Retail and 'lite' Food and Beverage type uses.

Being within the prime retail core diagonally opposite the iconic Monument Mall and within the newest and largest development in the City Centre, the opportunity to secure representation is an exciting one.

**PILGRIM'S
QUARTER**
Newcastle upon Tyne

Accommodation Ground Floor



| RETAIL UNITS | SQM | SQFT |
|--------------------------|------------|---------------|
| Unit 1 | 202 | 2,174 |
| Unit 2 | 114 | 1,227 |
| Unit 3 | 192 | 2,067 |
| Unit 4 | 125 | 1,345 |
| Unit 5 | 240 | 2,583 |
| Unit 6 | 92 | 990 |
| TOTAL RETAIL AREA | 966 | 10,398 |

**PILGRIM'S
QUARTER**
Newcastle upon Tyne

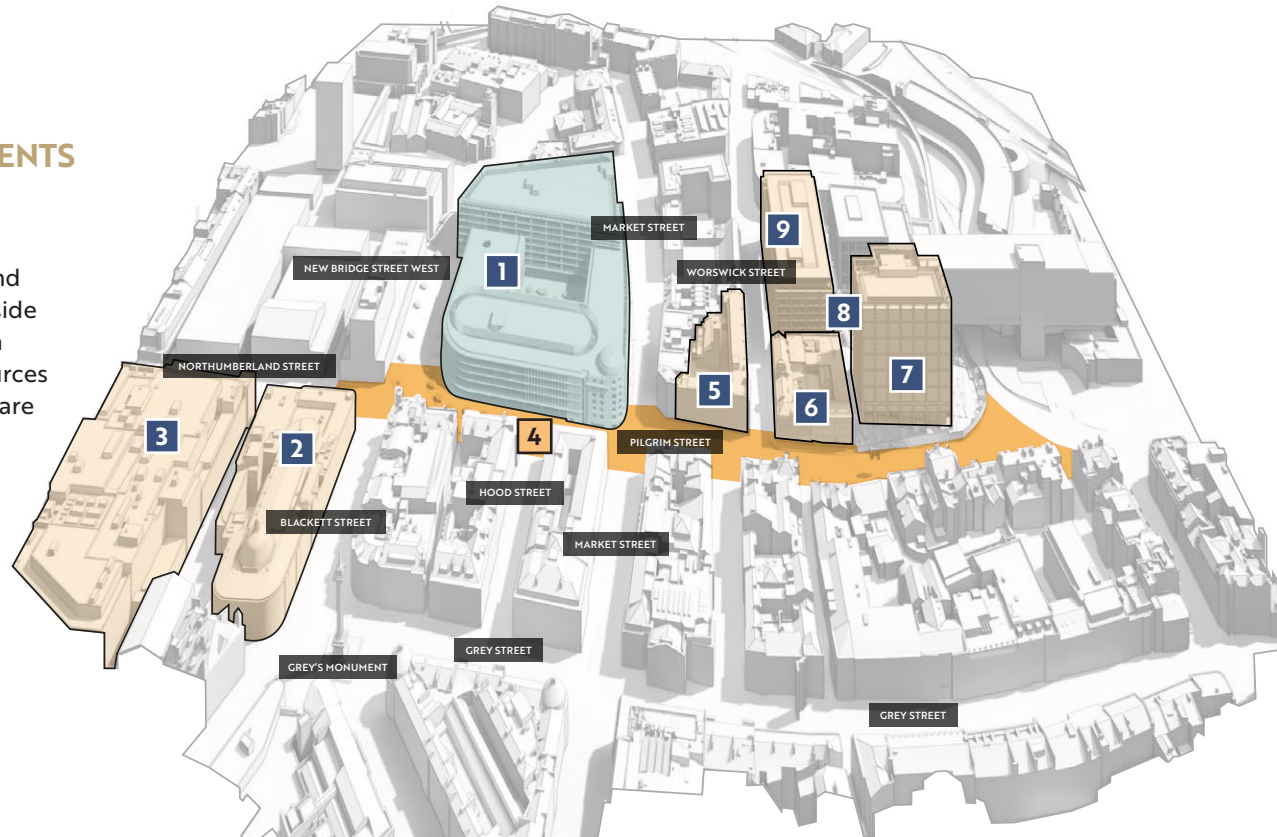
PILGRIM'S QUARTER

Newcastle upon Tyne

Surrounding Activity

PEDESTRIAN IMPROVEMENTS

Newcastle City Council have a commitment to public realm improvements on Northumberland Street, the connecting lanes and side streets and the adjacent northern end of Pilgrim Street. Funding sources are being finalised and designers are currently working on proposals.



1 PILGRIM'S QUARTER



2 MONUMENT MALL

Provides over 135,000 sq ft of prime modern retail and leisure accommodation.

3 FENWICK

Flagship department store with planned multi-million pound investment / renovation programme.

4 PILGRIM STREET PUBLIC REALM

Enhancements to Pilgrim Street funded by LEP.

5 BOUTIQUE HOTEL

60 bed 5* boutique Hotel by Bespoke with ground floor café, bar and restaurant in the refurbished Grade II Listed building.

6 WORSWICK CHAMBERS

Fully refurbished new food and leisure operation extending to 45,500 sq ft.

7 BANK HOUSE

A new 120,120 sq ft gateway office to the city at the southern end of Pilgrim Street.

8 PILGRIM PLACE

New public square at the heart of the southern block.

9 1-2 PILGRIM PLACE

Two Grade A office buildings with over 250,000 sq ft accommodation. 323 space car park below ground.



Bank House



Worswick Chambers



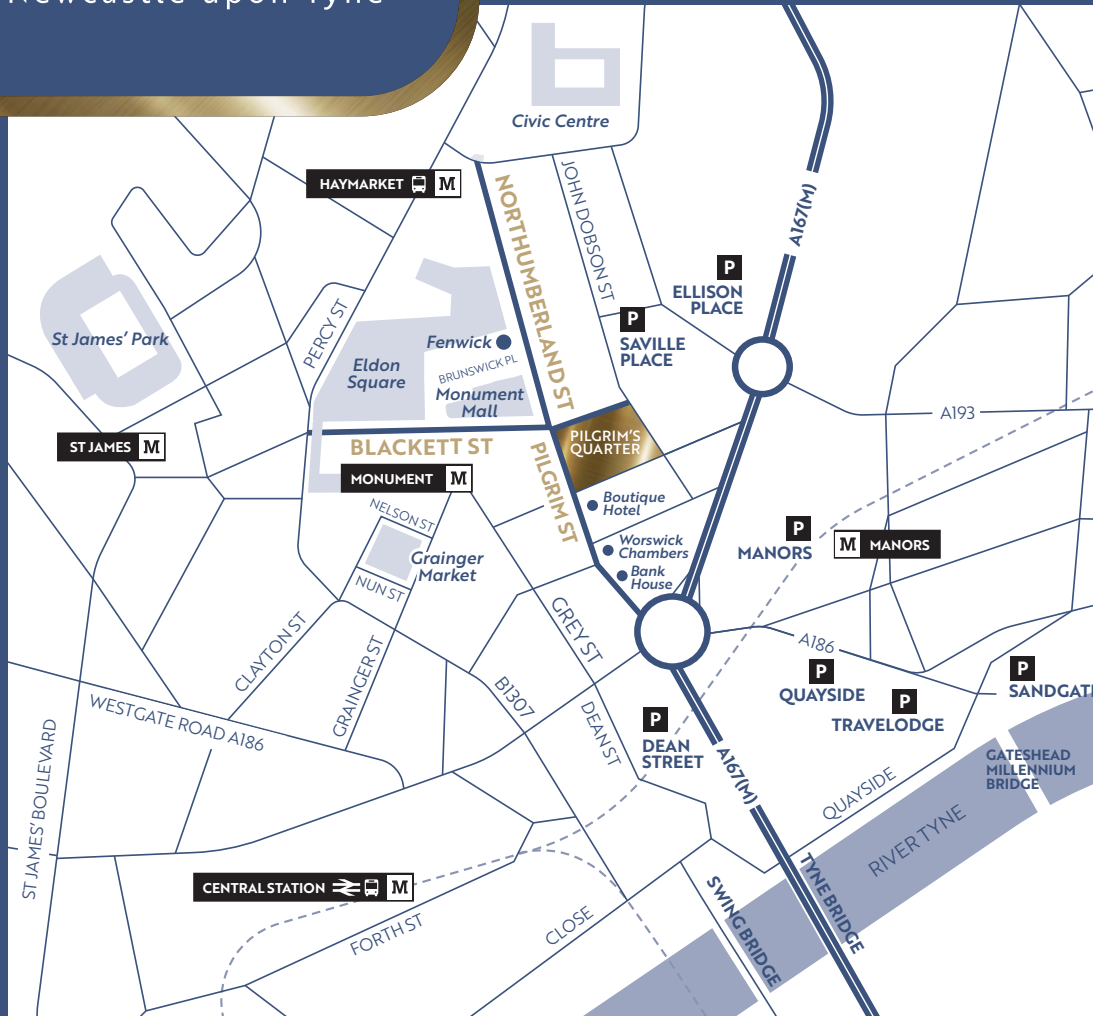
Boutique Hotel



Monument Mall

PILGRIM'S QUARTER

Newcastle upon Tyne



**CONTACT JOINT AGENTS
TO DISCUSS THE OPPORTUNITIES
IN FURTHER DETAIL**

@retail
ANGUS : THURLBECK PROPERTY CONSULTANTS



IAN ANGUS
T: 07960 466211
E: iana@atretail.co.uk

STEVE HENDERSON
T: 07870 999618
E: shenderson@savills.com

Important Notice: Savills, their clients and any joint agents give notice that 1. They are not authorised to make or give any representations or warranties in relation to the property either here or elsewhere, either on their own behalf or on behalf of their client or otherwise. They assume no responsibility for any statement that may be made in these particulars. These particulars do not form part of any offer or contract and must not be relied upon as statements or representations of fact. 2. Any areas, measurements or distances are approximate. The text, photographs and plans are for guidance only and are not necessarily comprehensive. It should not be assumed that the property has all necessary planning, building regulation or other consents and Savills, November 2023.